

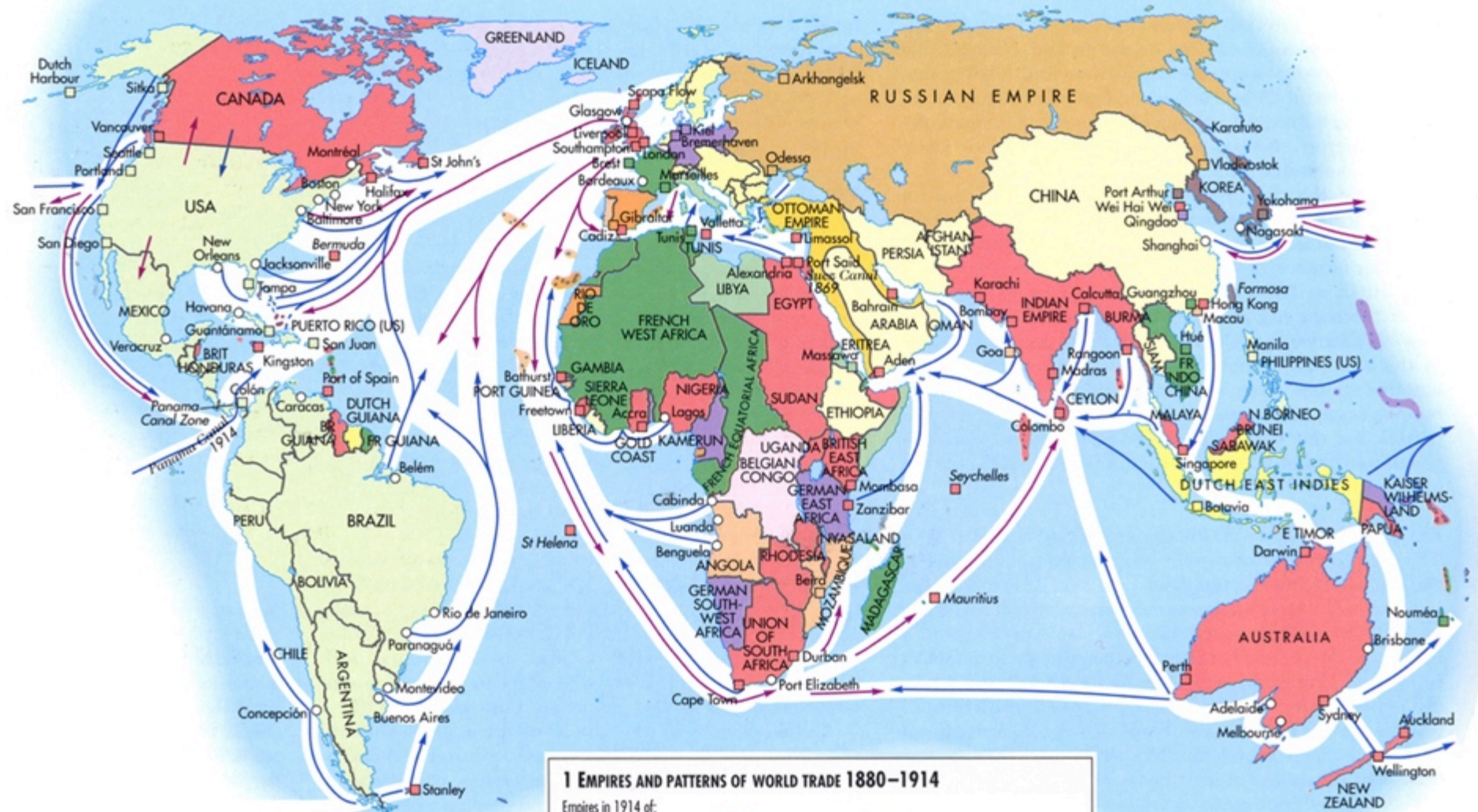
AMERICAN IMPERIALISM

PT. 1

US History II

“God has not been preparing the English-speaking... peoples for a thousand years for nothing but vain and idle self-admiration. No....He has made us adept in government that we may administer government among savage and senile peoples....He has marked the American people as His chosen nation to finally lead in the redemption of the world.”

SENATOR
ALBERT
BEVERIDGE
1900



▲ The strengthening of colonial rule was linked to a number of economic and political factors, including the need for raw materials to supply rapidly industrializing economies and the desire to find new markets for manufactured goods.

1 EMPIRES AND PATTERNS OF WORLD TRADE 1880-1914

Empires in 1914 of:

 Britain	 Belgium	 Independent country
 France	 Denmark	 Independent country previously under European control
 Germany	 Italy	 Major shipping route
 Portugal	 Turkey	 Main trade in raw materials
 Spain	 Russia	 Main trade in manufactured goods
 Netherlands	 Japan	 Major base and coaling station

EARLY STIRRINGS

- America is late to the game of acquiring territory
- Alaska
 - “Russian America”
 - Purchased in 1867
 - “Seward’s Folly” / “Seward’s Ice Box”
 - Is it worth \$7.2 million?



EARLY STIRRINGS

- Almost wars...
 - 1891 - 11 Italians were killed in New Orleans
 - 1892 - 2 Americans killed in a bar in Chile – we make them pay
 - 1889 - near naval war with Germany over the Samoan islands
 - 1895 - Britain trying to control boundaries in Canada, near war



ANNEXATION OF HAWAII



- Queen Lili'uokalani
 - Crowned in 1891
 - “lee-lee oo kuh lawn ee”
- Believed foreign influence was causing all of Hawaii's problems
 - Especially loss of culture

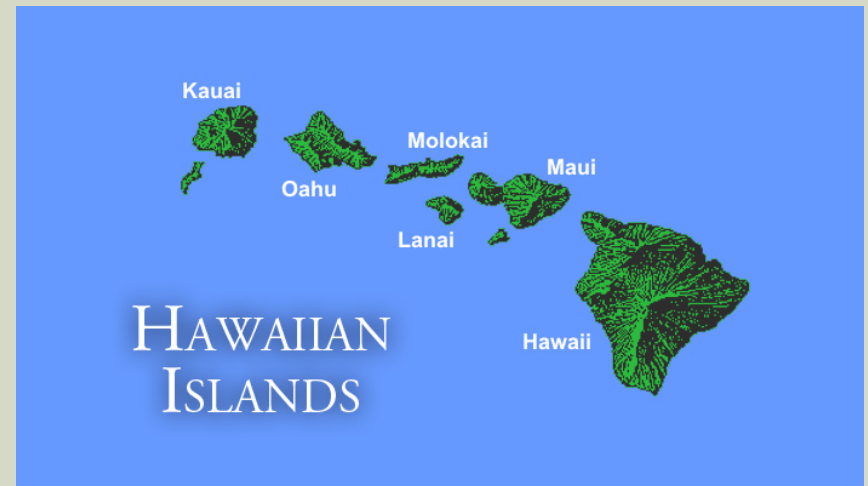
ANNEXATION OF HAWAII



Hula dancers during Queen Lili'uokalani's reign

ANNEXATION OF HAWAII

- In 1893 Queen Lili'uokalani toured through the islands on horseback promoting her new constitution
 - No voting for non-Hawaiian citizens
 - More voting rights for native Hawaiians by removing property requirements

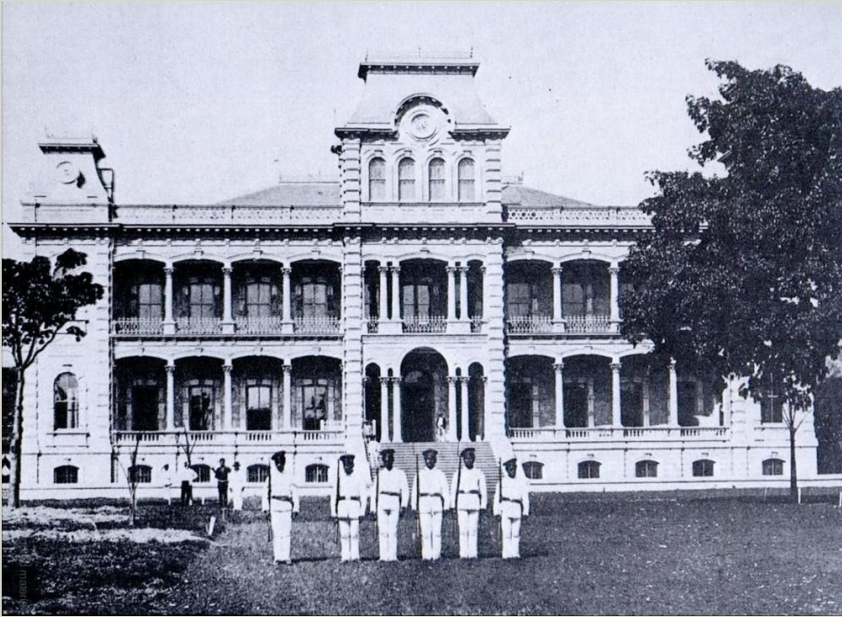


ANNEXATION OF HAWAII

- Since the 1840s US has been heavily involved in Hawaiian sugar trade
- McKinley Tariff
 - 1890
 - Raised import rates on foreign sugar
 - Depression sweeps through islands
 - White sugar growers want to become a US territory
 - Worried about Japanese sugar workers



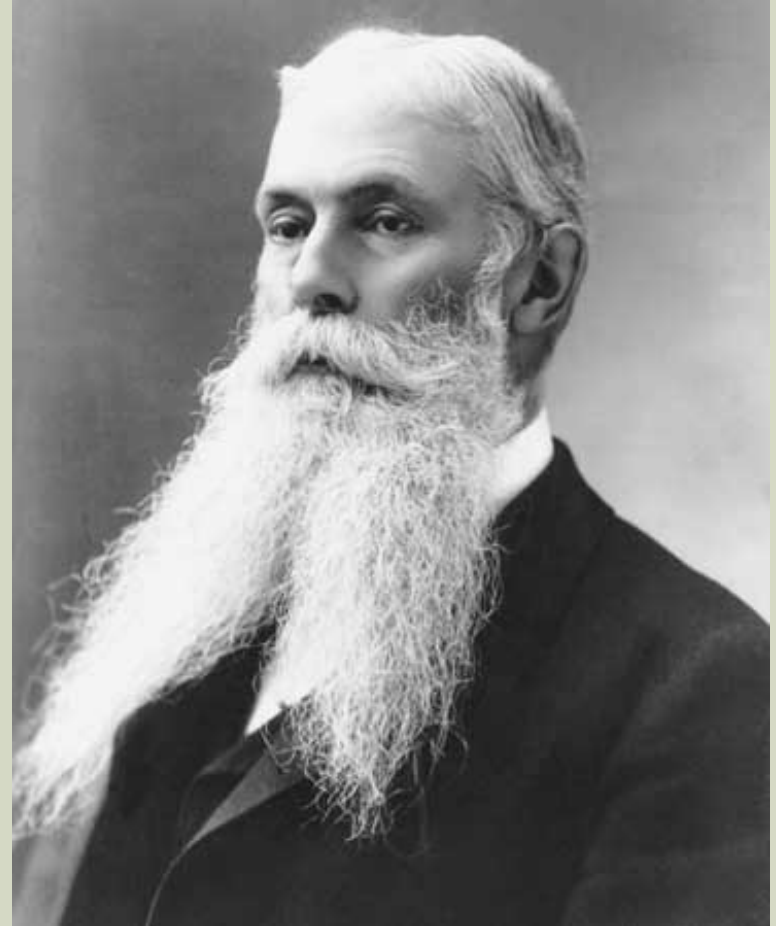
ANNEXATION OF HAWAII



- On January 17, 1893 the Queen was overthrown
 - Committee of Safety
 - Sailors and Marines
- Queen desired, “to avoid any collision of armed forces, and perhaps the loss of life” and abdicates

ANNEXATION OF HAWAII

- President Cleveland tried to reinstate the monarchy
 - Blount Report
 - Morgan Report
- July 4, 1894
- Sanford Dole, declared himself first President of Hawaii
 - 1894 – 1903





"...the provisional government owes its existence to an armed invasion by the United States. By an act of war...a substantial wrong has been done."



**PRESIDENT
GROVER
CLEVELAND
1893**

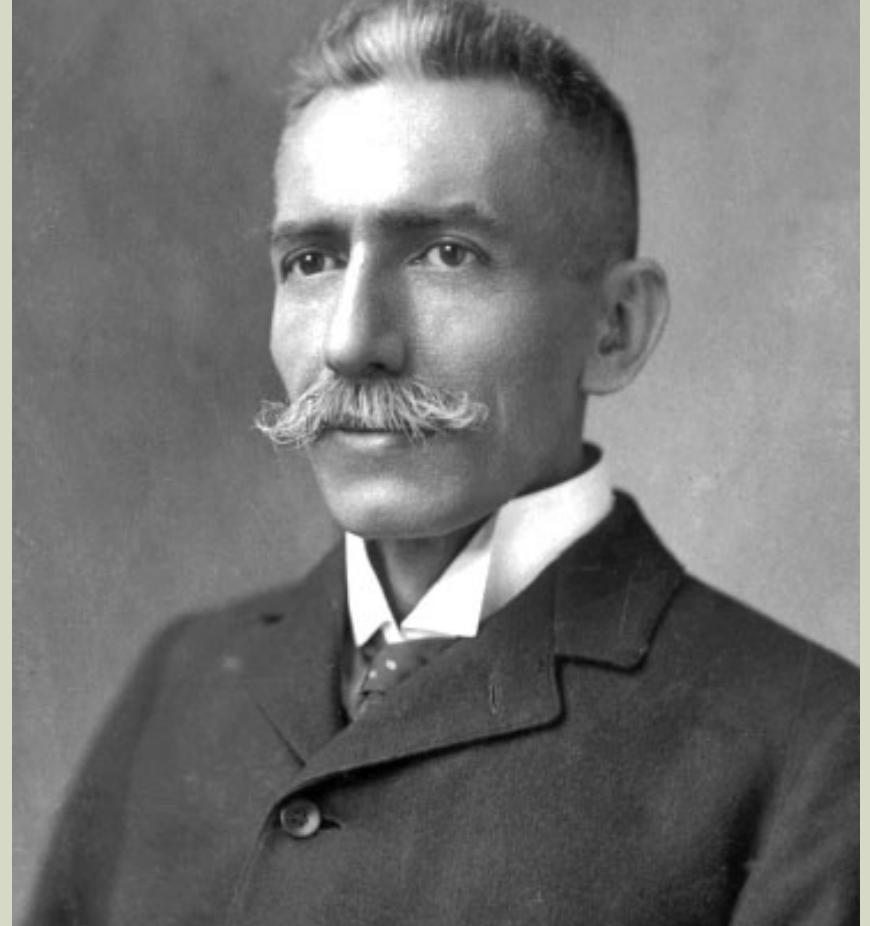
ORGANIC ACT – JUNE 14, 1900

- Capital in Honolulu
- Citizens of the Republic of Hawaii were now US citizens
- Established a gov't for the Territory of Hawaii
- Admission Day



WILCOX REBELLIONS

- **Robert Wilcox**
 - Descendant of King Keawe'īkekahiali'iokamoku
 - Studied artillery in Italy
- **Planned rebellions in 1888 and 1889**
 - Against the constitutions that took away votes from native Hawaiians
- **1895 conspired with the Queen to restore the monarchy – it failed**
- **US Congressman 1900-1902**



APOLOGY RESOLUTION - 1993

Resolved by the Senate and House of Representatives of the United States of America in Congress assembled,

The Congress

- apologizes to Native Hawaiians on behalf of the people of the United States for the overthrow of the Kingdom of Hawaii on January 17, 1893... and the deprivation of the rights of Native Hawaiians to self-determination;
- expresses its commitment to acknowledge the ramifications of the overthrow of the Kingdom of Hawaii, in order to provide a proper foundation for reconciliation between the United States and the Native Hawaiian people; and
- urges the President of the United States to also acknowledge the ramifications of the overthrow of the Kingdom of Hawaii and to support reconciliation efforts between the United States and the Native Hawaiian people.

APOLOGY RESOLUTION - 1993



November 23, 1993